

FACILITIES BEING ESTABLISHED

- CT SCAN (Trauma Center)
- UPGRADATION OF EMERGENCY
- ICU
- CCU
- DIALYSIS
- PHYSIOTHERAPY
- BURN UNIT
- DENTAL UNIT
- LAUNDRY
- MORTUARY
- YELLOW ROOM
- WATER FILTRATION PLANT
- CANTEEN

SERVICES TO BE OUTSOURCE

- MEP
- JANITORIAL
- PARKING & SECURITY
- CAFETERIA
- AC's & GENERATORS
- LAUNDRY
- CT SCAN
- PATHOLOGY LABS
- HORTICULTURE

THEMATIC AREAS OF MSDS

- 2.1 ACCESS, ASSESSMENT, AND C.CONTINUITY OF CARE (AAC)
- CARE OF PATIENTS (COP)
- MANAGEMENT OF MEDICATION (MOM)
- PATIENT RIGHTS AND EDUCATION (PRE)
- HOSPITAL INFECTION CONTROL (HIC)
- CONTINUOUS QUALITY IMPROVEMENT (CQI)
- RESPONSIBILITIES OF MANAGEMENT (ROM)
- FACILITY MANAGEMENT AND SAFETY (FMS)
- HUMAN RESOURCE MANAGEMENT (HRM)
- INFORMATION MANAGEMENT SYSTEM (IMS)

IT INTERVENTIONS

- QUEUE MANAGEMENT SYSTEM
- ELECTRONIC MEDICAL RECORD

NEW MANAGEMENT STRUCTURE

- NMS
- CONSULTANTS
- NURSES
- WMO's
- EMO's
- AHP
- PHARMACISTS
- PHYSIOTHERAPISTS



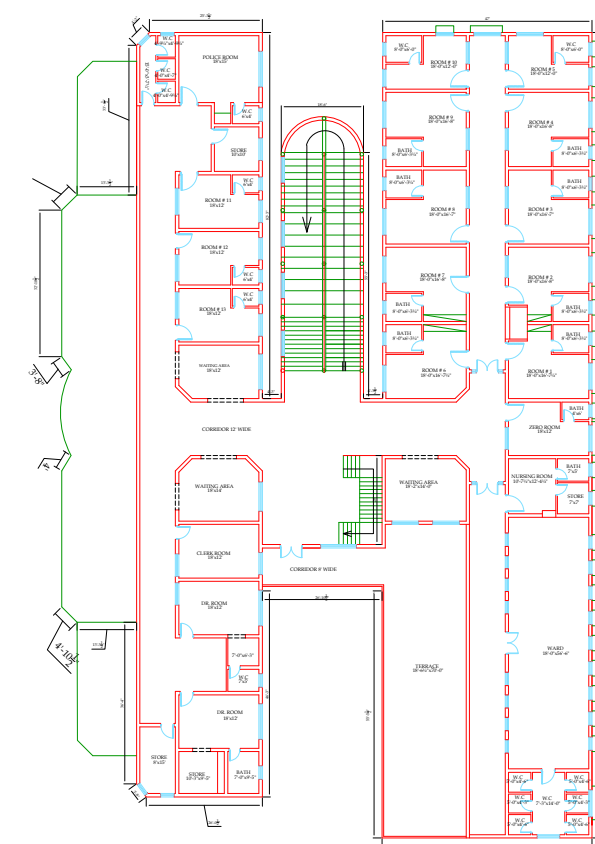
BY:
PROJECT MANAGEMENT UNIT
PRIMARY & SECONDARY
HEALTHCARE DEPARTMENT
GOVT. OF PUNJAB

LEGEND:

UP GRADATION & EXTENSION OF EXISTING FACILITY



PROPOSED BLOCKS



FIRST FLOOR PLAN OF THQ HOSPITAL HAZROO

MASTER PLAN OF THQ HOSPITAL HAZROO



MACHINERY & EQUIPMENTS

Area	Item Description	
Emergency Equipment	Table	
	Computer Data Entry With Printer	
	Table (2.5 X 4.75)	
	Chair (TN)	
	B.P apparatus with tape (TN)	
	Stetho with FOOT STRETCH (TN)	
	Mercury B.P apparatus (TN)	
	Laryngoscope pieces (sash)	
	resch (TN)	
	Diagnosis set (TN)	
Triage area	ECG Machine with trolley (TN)	
	Central oxygen with accessories	
	FOR each	
	NEBULIZER HD (TN)	
	SUCKER MACHINE (TN)	
	CRASH TROLLY EQUIPPED (TN)	
	RESTRAINT CABINET (TN)	
	MEDICINE TROLLY (TN)	
	C.T. table WITH foot step	
	Center Oxygen supply (TN)	
Minor O.T	Sucker machine	
	Portable C.T. Light	
	Ceiling o. Light	
	Hot air gun	
	Autoclave	
	Instrument trolley (TN)	
	Instrument cabinet	
	SURFING (TN)	
	Sucker machine (TN)	
	Nebulizer HD (TN)	
Constant / specialized care room	Center Oxygen supply (TN)	
	Resuscitation Trolley (fully equipped)	
	Defibrillator (TN)	
	Pulse oximeter (TN)	
	ECG machine (TN)	
	BP APPARATUS (TN)	
	FOOT STRETCH (TN)	
	ATTENDANT BECH (TN)	
	(MORTIFIED BEDS) with accessories with foot step (TN)	
	ECG machine with trolley (TN)	
Emergency ward	B.P. apparatus with tape (TN)	
	Nebulizer HD (TN)	
	Sucker machine (TN)	
	Wheat chair (TN)	
	Stretcher (TN)	
	ambu bag adult with Mask (TN)	
	patient stool (TN)	
	Portable xray (300 M.A)	
	Portable ultrasound	
	Shoe Cover Machine	
Generalized	Vacu Finer	
	Acrylic Storage Board	
	Medical Equipment	
	Area	Name of Equipment
	Laboratory	Semi Auto Clinical Chemistry Analyzer
		Hematology Analyzer
		Electrolyte Analyzer
		Blood Smear Analyzer
		Clinical Microscope
		Water Bath
Hot air Oven		
Cooled water plant		
Auto pipettes		
glass ware		
X.Rays	Centrifuge Machine	
	Dark X-ray Machine	
	Mobile X-ray Machine	
	Computed Radiography System	
	Lead apron and P.P.E.	
	Densito meter personal (Assd)	
	Lead glass shield	
	Lead Wall	
	Portable/Mobile Ultrasound	
	Car. Diap. RADIOLOGY	
Ultrasound	Catheter Monitor	
	Temporary pace maker	
	Defibrillator	
	ECG Machine Three Channel	
	ETT Machine	
	Color Dopler CARADIOLOGY	
	Blood Cabinet	
	Centrifuge Machine	
	Slide viewer	
	Clinical Microscope	
CCU	Conventional Hemo Dialysis Machine	
	Beds/Coil	
	Phototherapy Unit	
	Pulse Oximeter	
	Pulse Oximeter	
	Infant Incubator	
	Neonatal Grade Nebulizer Heavy Duty	
	Anesthesia Machine with Ventilator	
	BED SIDE PATIENT MONITOR	
	ICU Monitor	
Nursery	Defibrillator	
	Electrocardiogram Unit	
	Operation Table	
	Ceiling Operating Light	
	STEAM STERILIZER	
	Resuscitation trolley With Crash Cart	
	major table	
	MOBILE CONTRASTING LIGHT	
	Operation Table	
	DRYHEAT/DX DRILL	
Plaster Gypsum Pneumatic		
Pneumatic Torque		
Orthopedic Instruments		
Portable/Mobile Ultrasound		
O.T (4)	Autoclave	
	Delivery Set	
	Delivery Table	
	ICU Monitor	
	D.S.C. Set	
	Vacuum Extractor	
	CTO Machine	
	ECG Machine Three Channel	
	delivery table Lights	
	Beds/Coil	
Delivery trolley		
Desktop Field Heart Rate Deflector		
Surgical Emergency (10 beds)	Steam Sterilizer	
	Operation Table	
	MOBILE OPERATING LIGHT	
	Suction Pump	
	Laryngoscope	
	Set of Surgical Instruments	
	Shedule	
	wheel chair	
	Body support	
	Resuscitation trolley With Crash Cart	
Others	Resuscitation trolley With Crash Cart	
	BP Apparatus	
	Ventilator	
	C.P.A.P	
	X-RAY PROCESSOR	
	Hand wash Scrub Double Box	
	Heads headler	
	Central Medical Gase Pipe Line System	
	Refrigerator glass single Door	
	Coasters Machine	
CCTV camera top dome		
Washing Machines		
CCTV camera		
Stoves		
OVR for CCTV Camera		
Sound System for announcements		
Fire Extinguishers		
LED TV		
Machinery and Equipment (General)		
Area	Name of Equipment	
Others	Refrigerator(Domestic) front glass double door	
	Refrigerator glass single door	
	Air Curtain ON Door	
	Washing machines for garments	
	Gas burner for garments	
	Fire Extinguishers CO2	
	LED TV	
	4 Ton air conditioners (Cabinet)	
	2 Ton air conditioners (Cabinet)	
	Ceiling Fans 50"	
Bracket Fans 18"		
Industrial Exhaust		
Refrigerators 18 CO2		
Dual connection of Electricity / Express Line		
Electrical Distribution Boxes		
Protection cabin for electricity distribution boxes		
Bed Sheets and pillow covers		
Plates		
Blankets with covers		